

# blowing smoke

bruno kirchenwitz

## paving paradise

A happy new year, the '80s are over, the '90s are here. Yet for our fair valley Hwy 82 is still with us. In 1990 we are going to start solving our transportation problem by beginning to four-lane all of Hwy 82. Or are we? Let's take a closer look at this adventure in concrete creation we are about to undertake.

Along the 18 miles of the highway between Basalt and Aspen there are in excess of 180 dead-stop entry/exits. The Environmental Impact Statement of August '89, which contains around 500 pages, doesn't seem to address this aspect of the project. No mention of overpasses or frontage roads to allow access to our worker bee autobahn. Did I miss some fine print?

Or is the state highway department ready to clone, on a much grander scale, its recent

engineering fiasco known as the Basalt by-pass? A bypass that traps and kills deer and murders motorists due to its design. An "improvement" that has created more problems than it has solved. While the Basalt boondoggle took only a year or so to build, four-laning 82 will last well into the 21st century. And could even the most twisted of minds conjure a better way to shatter worker bee morale than by doubling their commute time to work every day for the next 15-20 years?

Besides delays to traffic, this project will encroach on or force relocation of homes and businesses, impact historic sites, destroy wetlands, encroach on recreational and open space sites, cause sedimentation of the Roaring Fork River throughout the entire project, destroy wild life habitat, kill more wildlife via vehicle collisions and generally degrade the visual quality of the Roaring Fork Valley. As for the benefits, I guess we can have lots of extra vehicles on the road piling into Aspen. Also it's supposed to be safer.

Now I don't have any doubt that four-laning will dramatical-

ly increase use. But as for being safer, I'm afraid the death toll on Killer 82 will increase along with its capacity to carry traffic. And all those added cars aren't going to be welcome in Aspen, are they?

Bigger is not always better. There are many portions of Hwy 82 where widening or adding lanes is entirely appropriate. Work on sections like Brush Creek to Aspen and east of the Basalt bypass to Old Snowmass should begin immediately. However, the total four-laning of Hwy 82 is economically, environmentally and socially counter-productive. Wake up, people! We're not just going to pave the road to Paradise, we're about to pave over Paradise!

Our transportation problem will not be solved by building an LA freeway in our pristine mountain valley. The answer lies in more public transportation and more affordable hives for worker bees near Aspen. Not in more concrete.

We had best be careful lest in 20 years we look around us and find we have paved Paradise and are left with only a parking lot.



ASPEN VALLEY HOSPITAL

M. Ray Painter, M.D.

Board Certified Urologist

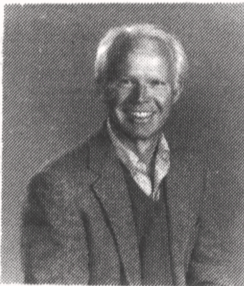
will be seeing patients at Aspen Valley Hospital on Wednesday, January 10, 1990. Call 925-1120, x295 to schedule an appointment.

# Real Estate

COMPANY



Great Building Site! — Fox Run 18 has outstanding down valley views and is surrounded by plenty of open space for a very private feeling. Offered at \$575,000.



STEVE STAY

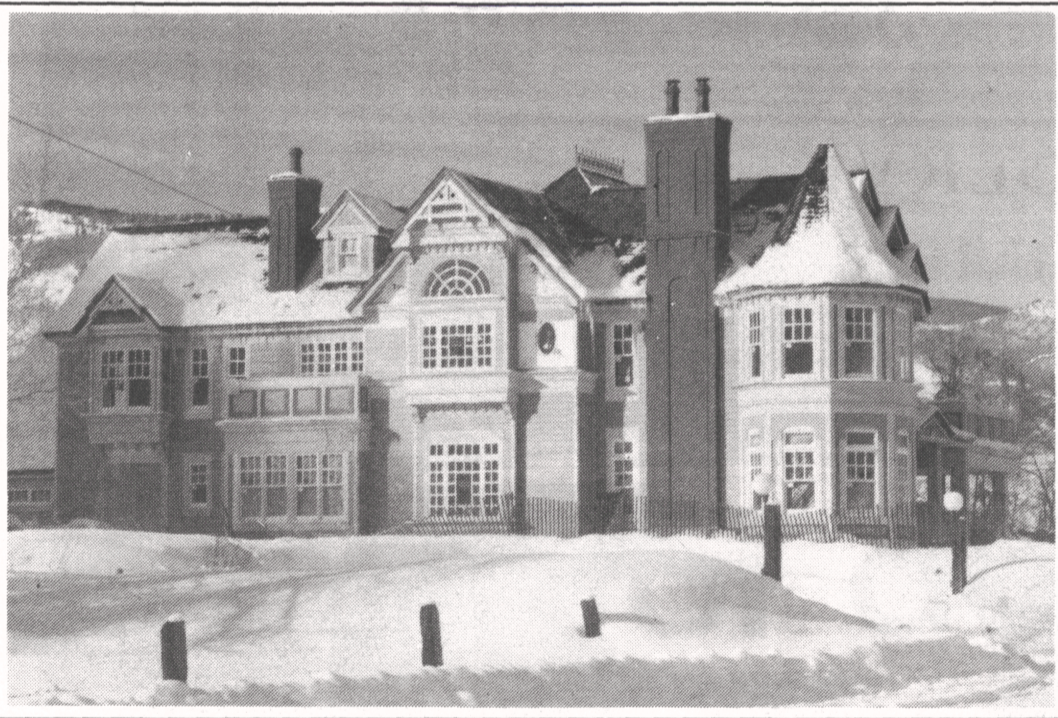
SNOWMASS REAL ESTATE COMPANY

Located on the Snowmass Village Mall (303)923-2006

# Real Estate

for Sale

## ASPEN'S FINEST REAL ESTATE



WEST END

4-bedroom/5½-bath, 5,518 sq. ft. new Victorian with 2 master suites, 3 fireplaces, heated driveway and a 4-car garage. Extensive use of marble and hardwoods, including authentic Victorian detail throughout. Located minutes from town on almost one acre in Aspen's West End. Completion — February 1990.

\$2,175,000

DURANT MEWS TOWNHOMES

New, 3-bedroom/3½-bath fully furnished, turnkey unit. 2½ blocks from the gondola on a quiet, dead-end street. Includes a new, 4-wheel drive vehicle. Immediate occupancy.

\$1,450,000

WEST END

Parcel B corner lot with great views southwest. Lots of sun! Zoning permits 3,240 sq. ft. above ground. Plus garage and basement.

\$550,000



COATES REID & WALDRON

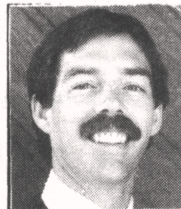
Real Estate • Rentals • Property Management

720 East Hyman Avenue • Aspen, Colorado 81611 • (303) 925-1400

Exclusive Affiliate Sotheby's International Realty

For more information

Contact: Robert Ritchie at 925-1400 or (h) 925-9466



Robert Ritchie Listing Broker



EXCELLENT BUSINESS OPPORTUNITY



20 years operating success

La Piuma of Aspen Inc.

A well located, upscale women's clothing and accessories boutique

WILL TRADE

for warm weather climate house, condo or townhouse.

WHY MISS OUT?

Call now.

RE/MAX®

Mountain View, Inc.

121 South Galena, Aspen

Colorado 81611

Office: (303) 920-3800

Residence: 920-3436

Residential-Commercial-Sales & Exchanges



Ed Monge Broker/Associate